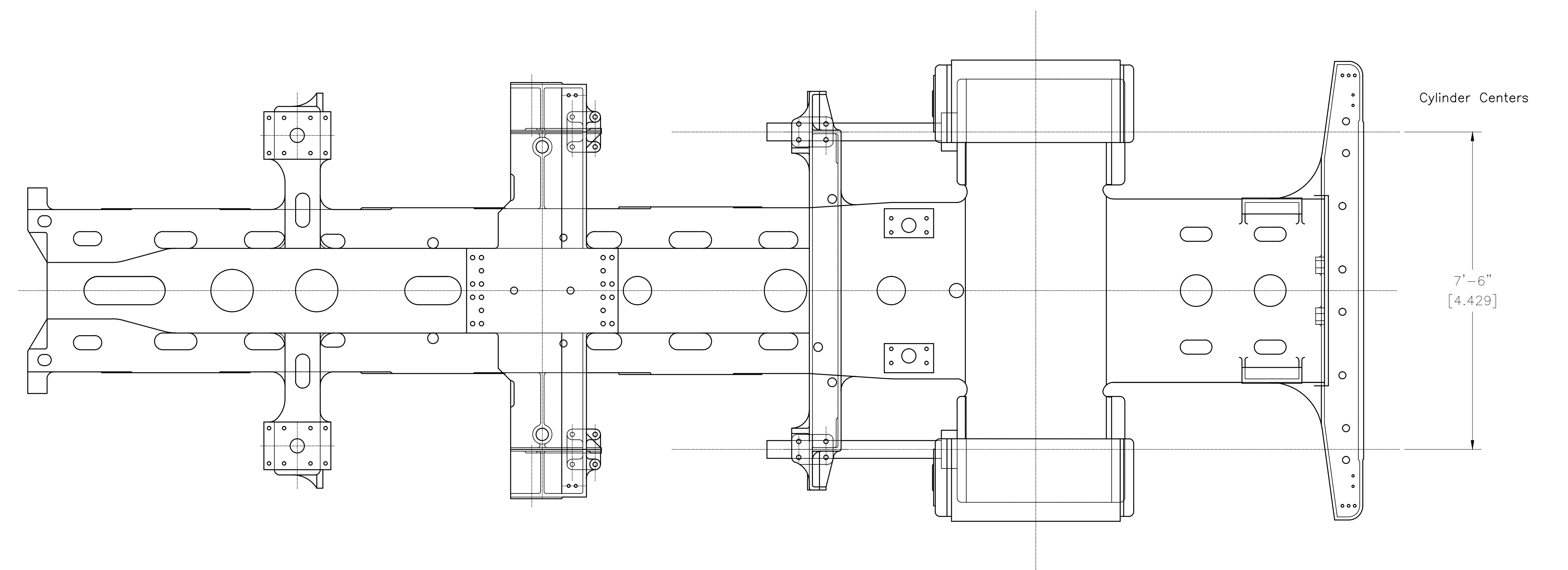
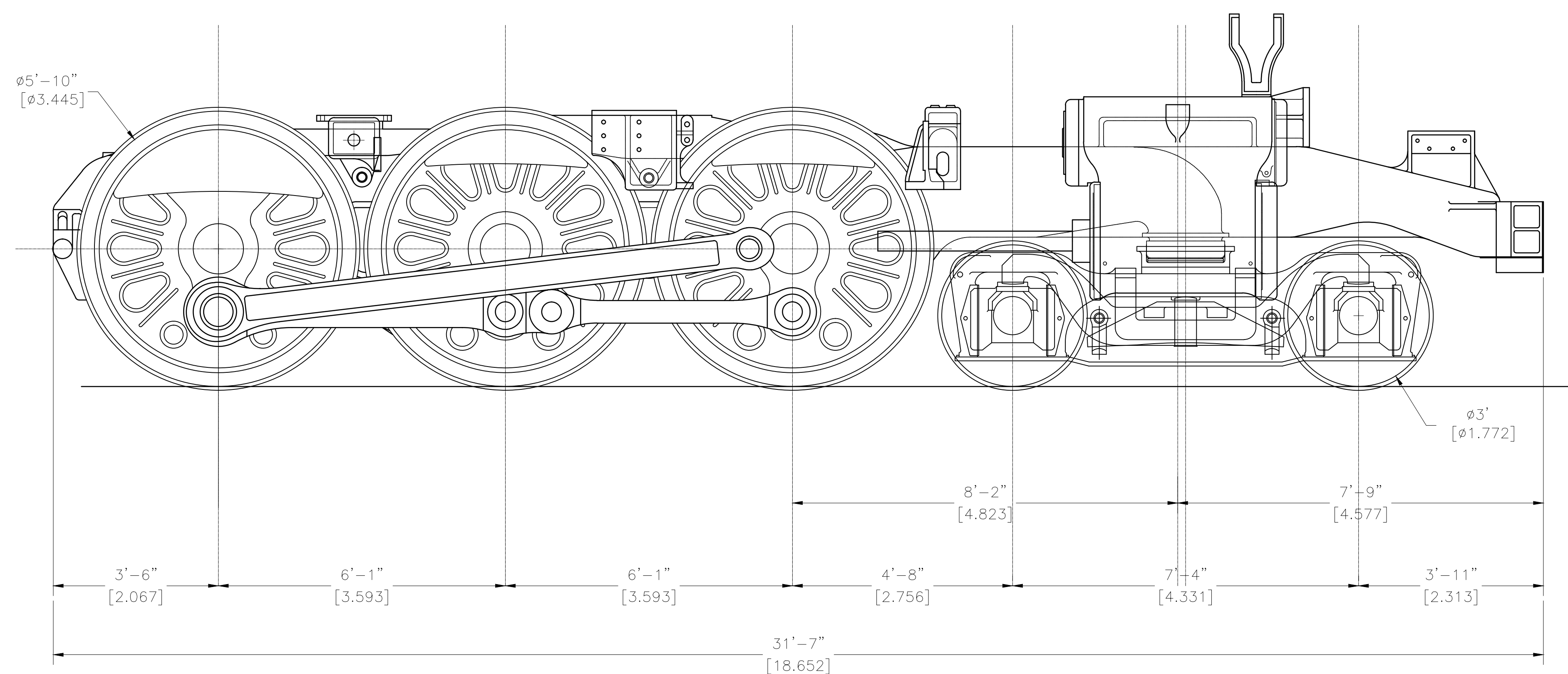


Prototype Bearing boxes not shown.



Cylinder Centers

7'-6"  
[4.429]



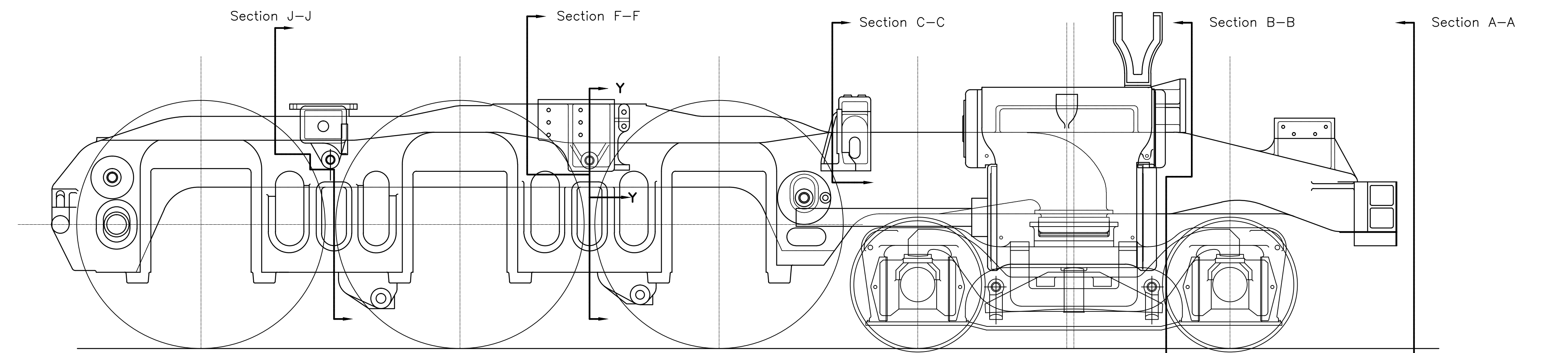
ø5'-10"  
[ø3.445]

ø3'  
[ø1.772]

3'-6" [2.067]    6'-1" [3.593]    6'-1" [3.593]    4'-8" [2.756]    7'-4" [4.331]    3'-11" [2.313]

8'-2" [4.823]    7'-9" [4.577]

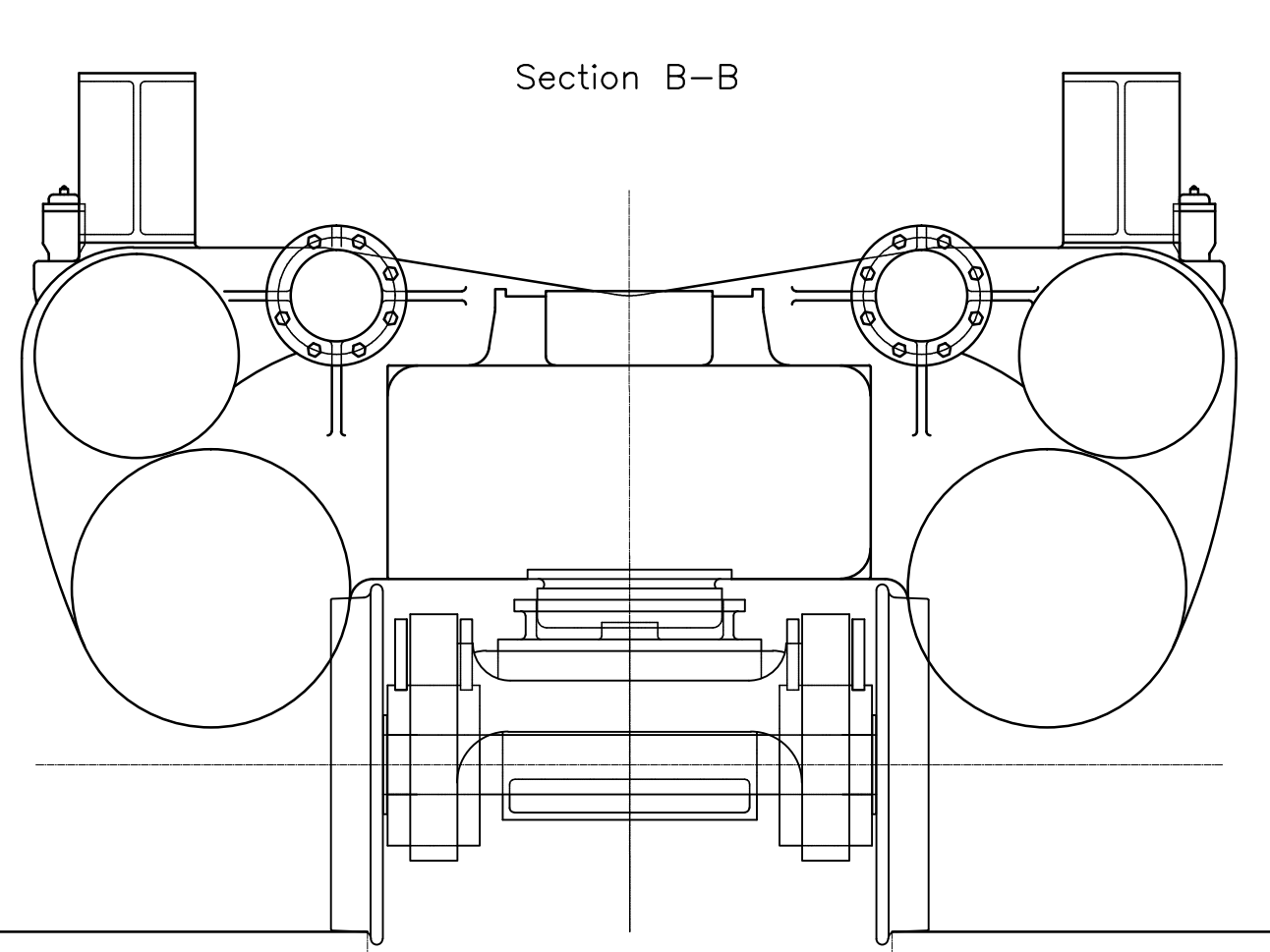
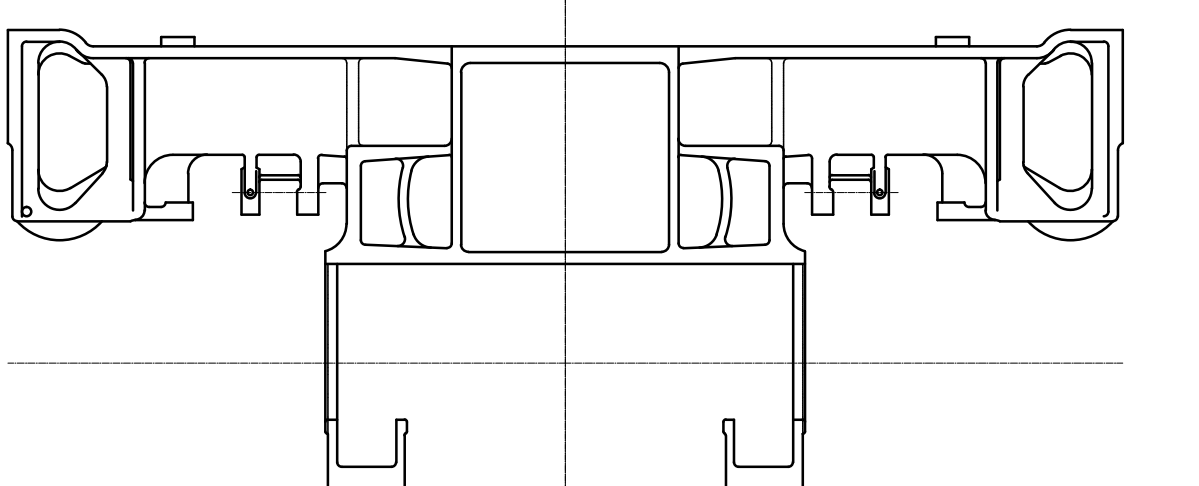
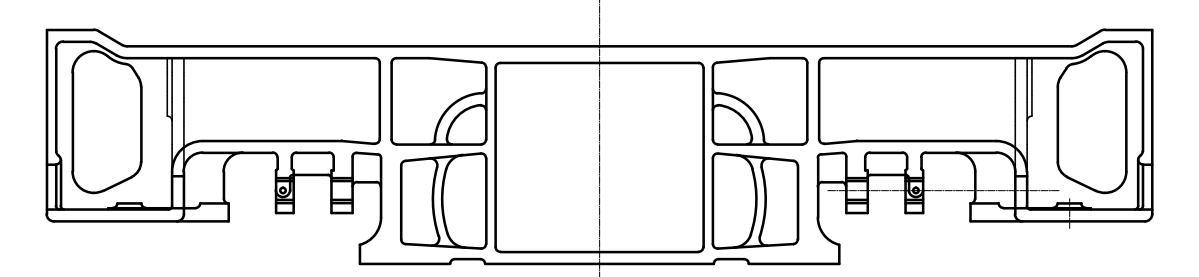
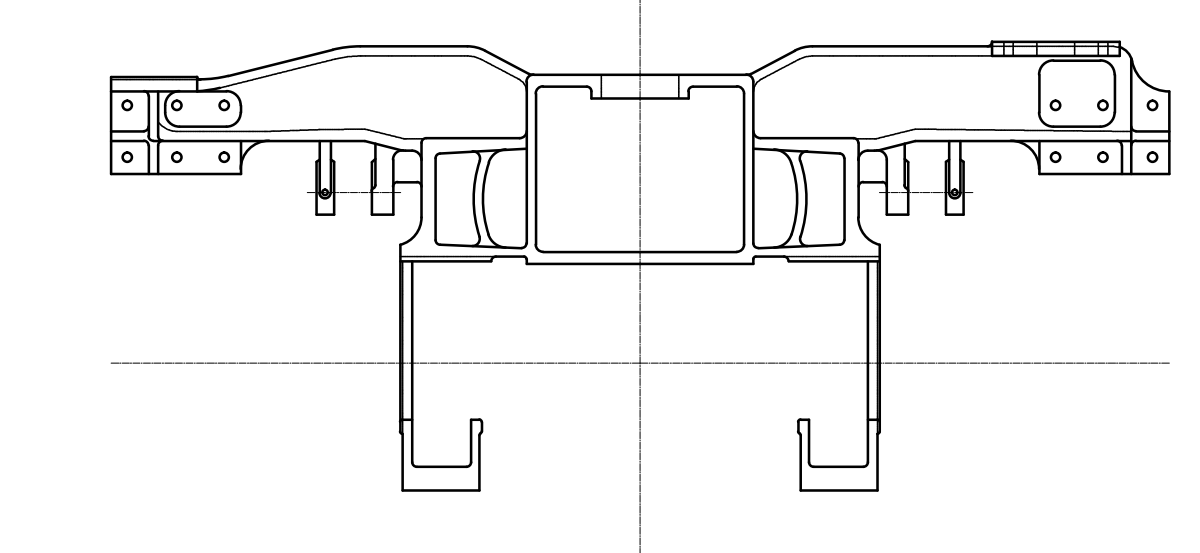
31'-7" [18.652]



Section J-J

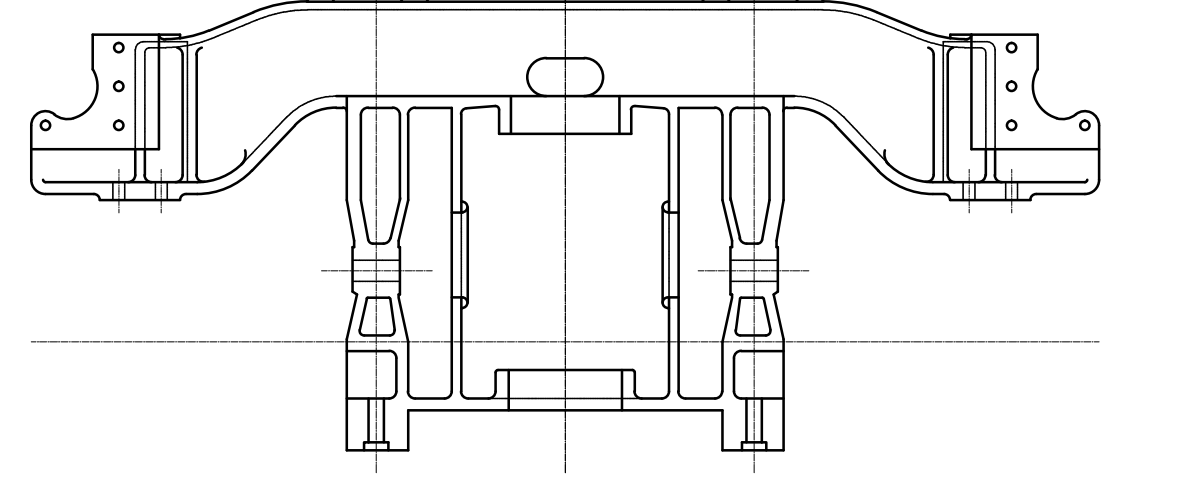
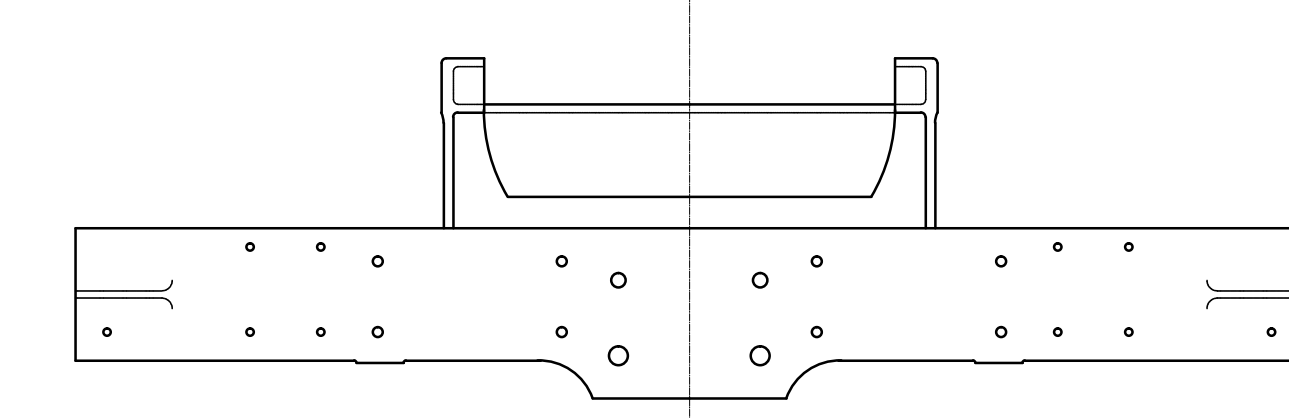
Section Y-Y

Section F-F



Section A-A

Section C-C



Note undersize ø0.250" axles on model.

Component layers can be toggled on and off.

Notes:  
 Drawing Size E if printed at scale of 1:20.32  
 Drawing Units: Architectural  
 Dimensions: Prototype / Actual size F scale model  
 Drawing Origins: D&RGW L-105 Elevation & Sections  
 D&RGW Front Frame blueprint; Drivers from  
 Hunniman Publishing Locomotive Cyclopaedia  
 Drawing represents prototype dimensions and sections  
 without compensation for model materials & limitations.

CUMBERLAND MODEL  
 ENGINEERING  
 D&RGW L-105 4-6-6-4 Lead Engine  
 REV: 22 NOV 2011 DRAWN BY: D. Queener  
 From Proto. Frame Elev./Section Views